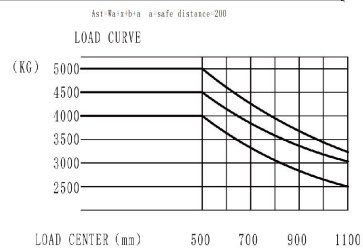
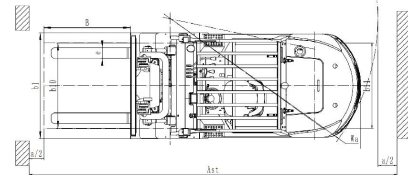
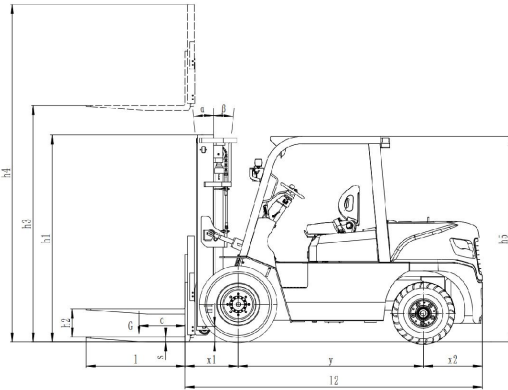


# MAST SPECIFICATIONS & RATED CAPACITIES

MAST SPECIFICATIONS & RATED CAPACITIES														
Mast Type	Mast Name	Max. Fork Height (mm)	Load Capacity (kg)						Overall Height (mm)		Free Lift (mm)		Tilt Angle	
			FB40T	FB40T (Double)	FB45T	FB45T (Double)	FB50T	FB50T (Double)	Lowered	Extended		Without Backrest		With Backrest
										Without Backrest	With Backrest			
								4.0/4.5/5.0t		4.0/4.5/5.0t				
Wide View Mast	RM300	3000	4000	4200	4500	4750	5000	5300	2260	3730	4260	140	140	6-12
	RM330	3300	4000	4200	4500	4750	5000	5300	2410	4030	4560	140	140	6-12
	RM350	3500	4000	4200	4500	4750	5000	5300	2510	4230	4760	140	140	6-12
	RM370	3700	4000	4200	4500	4750	4850	5150	2610	4430	4960	140	140	6-12
	RM400	4000	4000	4200	4500	4750	4650	4850	2810	4780	5260	140	140	6-6
	RM430	4300	3800	4000	4200	4450	4300	4600	2960	5080	5560	140	140	6-6
	RM450	4500	3600	3800	4000	4250	4200	4500	3060	5280	5760	140	140	6-6
	RM470	4700	3300	3500	3700	3950	3800	4100	3160	5480	5960	140	140	6-6
	RM500	5000	3000	3200	3500	3750	3650	3900	3310	5780	6260	140	140	6-6
	RM550	5500	2300	2500	2700	2950	2800	3100	3560	6280	6760	140	140	3-6
2-Stage Full Free Wide View Mast	RM600	6000	2000	2200	2400	2650	2500	2800	3860	6830	7260	140	140	3-6
	FM300	3000	4000	4400	4500	4950	5000	5500	2260	3756	4116	1503	988	6-12
	FM350	3500	4000	4400	4500	4950	5000	5500	2510	4256	4616	1753	1238	6-12
	FM375	3750	3900	4300	4400	4850	4800	5300	2635	4505	4865	1878	1363	6-12
3-Stage Full Free Wide View Mast	FM400	4000	3800	4200	4300	4750	4600	5100	2810	4756	5116	2053	1538	6-12
	TFM400	4000	3800	4000	4300	4550	4600	4900	2205	4820	5265	1380	935	6-6
	TFM435	4350	3400	3600	3800	4050	4100	4400	2320	5165	5610	1495	1050	6-6
	TFM450	4500	3300	3500	3700	3950	4000	4300	2370	5315	5760	1545	1100	6-6
	TFM470	4700	3000	3200	3300	3500	3600	3900	2435	5510	5955	1610	1165	6-6
	TFM500	5000	2800	3000	3100	3350	3400	3700	2535	5810	6255	1710	1260	6-6
TFM550	5500	2300	2500	2600	2850	2900	3200	2700	6144	6675	1875	1430	3-6	
	TFM600	6000	1800	2000	2000	2250	2300	2800	2970	6915	7260	2045	1700	3-6

Note: With side shifter, load capacity subtract 200Kg.



**ZHEJIANG UN FORKLIFT CO., LTD.**

ADDRESS: NO.1, ROAD ONE, XINDENG NEW DISTRICT, FUYANG,

HANGZHOU, ZHEJIANG 311404, CHINA

TEL: +86-571-8688 8355 (AMERICA)

+86-571-8886 9363 (EUROPE)

+86-571-8688 8377 (ASIA, AFRICA, OCEANIA)

E-MAIL: info@unforklift.com

PARTS INQUIRY: parts@unforklift.com

www.unforklift.com



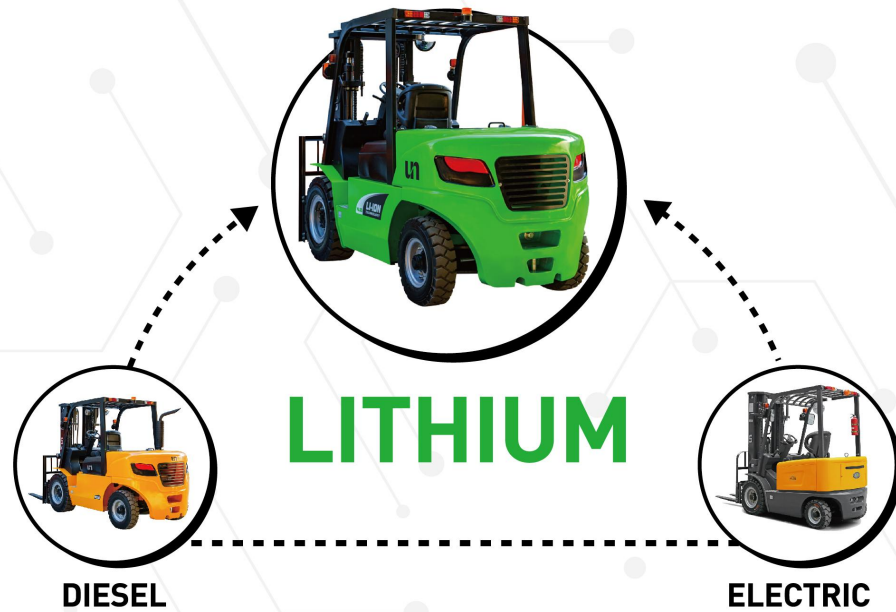
**Li-ion NL SERIES LITHIUM BATTERY COUNTERBALANCE FORKLIFT ( 4.0-mini 5.0T )**

www.unforklift.com  
**INNOVATIVE POWER**  
 THE UN FORKLIFT TRUCK

# NL Series Lithium Battery Counterbalance Forklift

Capacity 4,000 to 5,000 kg

The NL Series new lithium battery forklift adopts UN internal combustion forklift's design with the strong chassis, frame, counterweight and mast. The power structure is designed to adopt UN electric forklift's concept, which use full AC system, Italy imported ZAPI controller, BMS control system and high quality lithium battery. This combination of IC forklift and electric forklift makes an ideal solution to reach customers' satisfaction on cost saving and environmental friendly.



**LITHIUM BATTERY FORKLIFT IS CONVERTED FROM DIESEL FORKLIFT**

**TWO IN ONE, ONE FOR TWO**



## Safety and Convenience

The special hydraulic station ensures the steering is working when you are applying the brake. CAN-bus and BMS system monitor and protect the truck all the time. The big open angle allows you to reach all the parts easily.



## Fast Charging

Fully charge only needs about 2.5 hours, and it can be charged at any time during the day to ensure multiple shifts.



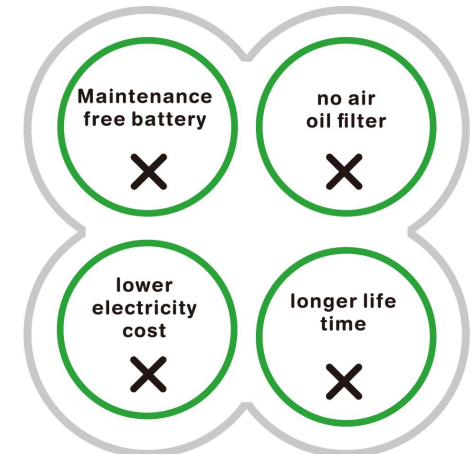
## Long Term Performance

The battery can be charged and discharged about 4000 times. Long life cycle plus 5 years guarantee on lithium battery ease customers' worry about the battery.



## Lower Total Ownership Cost(TOC)

The purchase cost is similar to regular IC forklift. No fuel consumption cost, no maintenance fee for air filter, oil filter or engine oil changes compare to a regular IC forklift.





## Strong & Durable Chassis

Adopting the durable and reliable IC truck structure, mast, axles and tyres, which have been tested by the market for more than 20 years.



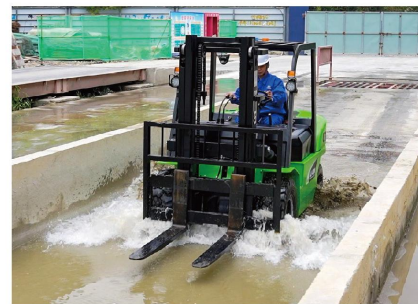
## Comfort & Ergonomics

Owing to the low center of gravity and good stability, the driver feels comfortable during turning. Bigger leg space than standard Li-ion forklifts.



## Multi-Scenario Usage

Adopting the IC forklift structures enable to operate indoor and outdoor, with great waterproof and dustproof performance.



## MAIN SPECIFICATIONS

	No.	Parameter	UN			No.	
			FB40-YNLZ7	FB45-YNLZ7	FB50-XYNLZ7		
General	1	Manufacturer				1	
	2	Model	FB40-YNLZ7	FB45-YNLZ7	FB50-XYNLZ7	2	
	3	Drive: Electric(battery or mains), Diesel, Petrol,fuel gas	Electric			3	
	4	Load capacity /rated load	Q(kg)	4000	4500	5000	4
	5	Load centre distance	c(mm)	500			5
Characteristic & Dimension	6	Rated lift height	h3(mm)	3000			6
	7	Free lift height	h2(mm)	140			7
	8	Fork Size (L×e×s)	mm	1070×150×55			8
	9	Tilt of mast/fork carriage forward/backward	α/β(°)	6°/12°			9
	10	Load distance, center of drive axle to fork	x1(mm)	574			10
	11	Rear Overhang	x2(mm)	640			11
	12	Ground clearance (Laden,below mast)	m1(mm)	170			12
	13	Length to face of fork (Without fork)	l2(mm)	3215			13
	14	Overall width	b1(mm)	1485			14
	15	Mast lowered height	h1(mm)	2260			15
	16	Mast extended height (With backrest)	h4(mm)	4260			16
	17	Overhead guard height	h5(mm)	2260			17
	18	Turning radius (Outside)	Wa(mm)	2880			18
	19	Aisle width for pallets 1000×1200 crossways	Ast(mm)	4655			19
	20	Aisle width for pallets 800×1200 lengthways	Ast(mm)	4855			20
Performance	21	Travel speed (Full load / No load)	km/h	14/15			21
	22	Lifting speed (Full load / No load)	mm/sec	290/400			22
	23	Lowering Speed (No Load/Full Load)	mm/sec	No Load≥300 Full Loads≤600			23
	24	Max.Gradeability (Full load)	%	15			24
Chassis	25	Tyre size (Front x 2)	mm	300-15-18PR			25
	26	Tyre size (Rear x 2)	mm	7.00-12-12PR			26
	27	Front tread	b10(mm)	1190			27
	28	Rear tread	b11(mm)	1195			28
	29	Wheelbase	y(mm)	2000			29
Weight	30	Total Weight	kg	6305	6505	6805	30
	31	Front Axle Weight Distribution (Full Load)	kg	8810	9550	9750	31
	32	Rear Axle Weight Distribution (Full Load)	kg	1495	1455	1555	32
	33	Front Axle Weight Distribution (No Load)	kg	2650	2610	2710	33
	34	Rear Axle Weight Distribution (No Load)	kg	3655	3895	4095	34
Power & Transmission	35	Battery	V/Ah	76.8V/450AH			35
	36	Drive Motor	KW	21.5			36
	37	Lift Motor	KW	25.4			37
	38	Operating Pressure (For Attachments)	Mpa	19			38